

## ERRAC:

The European Rail Research Advisory Council

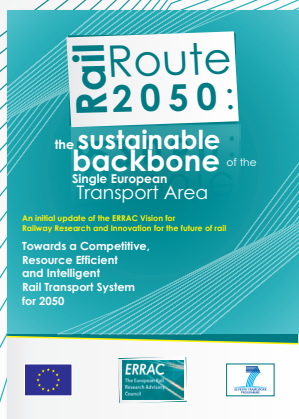


ERRAC was set up in 2001 with the ambitious goal of creating a single European body with both the competence and capability to help revitalise the European rail sector and make it more competitive, by fostering increased innovation and guiding research efforts at European level.

Within ERRAC all major rail stakeholders are gathered. ERRAC comprises 45 representatives from each of the major European rail research stakeholders: operators, infrastructure managers, manufacturers, the European Commission, EU Member States, academics and users' groups. Therefore, ERRAC covers all forms of rail transport: from conventional, high speed and freight applications to urban and regional services.

## Our vision

Since its launch in 2001, ERRAC has produced a number of important and influential documents. In 2012, ERRAC released an initial update of the ERRAC vision for the future of rail, RailRoute 2050, addressing the European effort required for research and innovation in order to meet the objectives set by the European Commission in 2011 through its Transport White Paper "Roadmap to a Single European Transport Area – Towards a competitive and resource efficient transport system".



## ERRAC Strategy

'RailRoute 2050' offers a range of research opportunities for a competitive, resource-efficient and intelligent rail transport system that meets the future demands of European citizens, enhances economic growth, creates European jobs and strengthens the position of the European rail sector in global competition. The European vision for railway research and innovation outlined in 'RailRoute 2050' illustrates the research pillars that need to be supplemented by the corresponding investment pillar.

From 2009 to 2012, the ERRAC Roadmap project was designed to support the platform in its work, and focused on the drafting and delivery of concrete and detailed roadmaps on common European R&D initiatives, with the aim of implementing the ERRAC Strategic Rail Research Agenda (SRRIA). The ROADMAP project had developed interrelated Rail Research Roadmaps in the areas of:

- Energy, noise & vibration
- Sustainable design & procurement,
- Passenger and freight – medium & long distance – transport,
- Urban mobility (developed together with the road technology platform – ERTRAC)
- Urban, sub-urban and regional rail transport,
- Safety & security
- Competitiveness (which includes rail infrastructure)

Started in May 2013, the FOSTER RAIL project will assist ERRAC and the other surface transport-related European Technology Platforms (ETPs) in defining their research strategies. FOSTER RAIL shall in particular build upon ERRAC-ROADMAP and continue to support and enhance cooperation between stakeholders, including decision-makers such as the European Commission (EC) and Member States and Associated States (MS/AS).

As regards research and innovation targeting co-modality and other multi-modal issues, FOSTER RAIL addresses them in cooperation with the other surface transport modes. This project is an essential support tool to help creating the ERRAC Strategic Rail Research and Innovation Agenda (SRRIA) as well as a Rail Business Scenario for 2050. This way, FOSTER RAIL will be a major support to the development of the European Framework Programme Horizon 2020 and the SHIFT<sup>2</sup>RAIL Joint Undertaking.



## ERRAC Mission

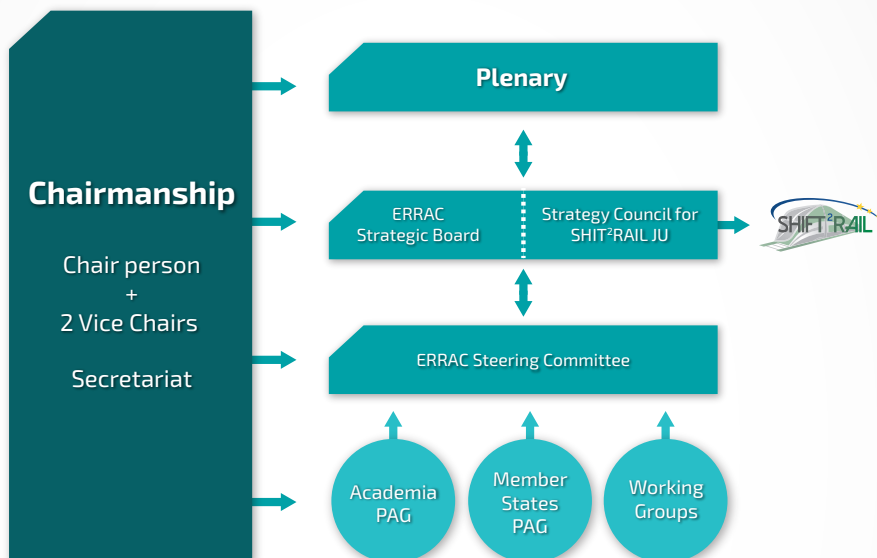
ERRAC is focusing on:

- 1 Defining and implementing the necessary steps in order to achieve a joint European rail research and innovation strategy.
- 2 Enhancing collaborative European rail research and innovation by:
  - Building consensus among stakeholders
  - Improving synergies between EU, national and private rail research
  - Strengthening and re-organising research and development efforts
  - Facilitating effective pooling of human and material resources
  - Launching ambitious co-operative research schemes

## ERRAC activities:

- Maximise the synergies among various national and European research programmes and promote an enhanced co-ordination of research actors
- Evaluate on-going and completed projects
- Propose input for the next EU Framework Program, HORIZON 2020
- Advise the European Commission on future rail research needs for Horizon 2020
- Promote ERRAC activities and implementing an efficient communication strategy throughout all relevant EU, national, regional and local stakeholders

# ERRAC Organisation



As European Technology Platform for rail research and innovation, ERRAC membership is comprised of the following rail stakeholder associations and their members:



For more information on ERRAC please visit: [www.errac.org](http://www.errac.org)